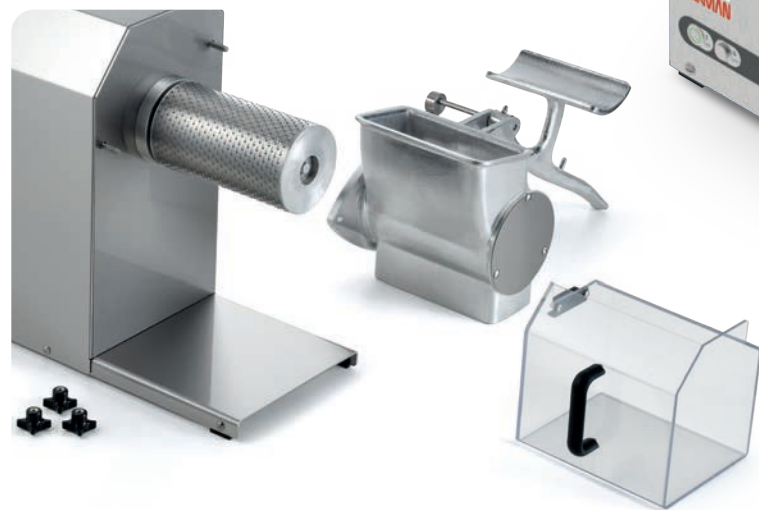


# GFX HP 1,5 - 110V GFX HP 2 - 110V GFX HP 2 - 220V GF HP 4

*Hard cheese graters, heavy-duty*

GFX HP 2 models  
features a removable hopper for ease of cleaning  
**The only one in the market**



- Powerful, reliable heavy-duty cheese and bread graters, suitable for medium to large applications.
- 120V and 220V direct gear-driven motors.
- Overload and no volt release protection.
- Specially milled stainless steel drum.
- GFX HP 2 hopper removes for ease of cleaning. The only one in the market!
- Handle interlock deactivates unit when hopper is open.

## Features

### Technical

- The drum is made from milled stainless steel for longer lasting performance and always perfectly grated product output
- 1/16" tooth for very finely grated product.
- The gear-driven motor easily processes the toughest products.
- Featuring heavy duty fan cooled motors with thermal overload relay

### Safety

- An interlock prevents the machine from starting when the handle is not lowered enough and stops the machine when the handle is lifted.
- Overcurrent and no volt release protection.

### Sanitary

- Removable hopper for ease of cleaning (GFX HP 2 models)
- Plexiglas® catch pan, dishwasher safe.

**Optional:** Stainless steel catch pan option

## Specifications

<b>Construction:</b>	Stainless steel body with anodized aluminum hopper. Specially milled stainless steel drum.
<b>Output GFX Hp 1,5-110V:</b>	Up to 3.6 Lbs./Min.
<b>Output GFX Hp 2-220V:</b>	Up to 4 Lbs./Min.
<b>Output GF Hp 4:</b>	Up to 8 Lbs./Min.
<b>Electrical GFX Hp 1,5-110V:</b>	120V, 60Hz, single-phase, 12A - 1.5 HP
<b>Electrical GFX Hp 2-110V:</b>	120V, 60Hz, single-phase, 14A - 2 HP, 14 AWG
<b>Electrical GFX Hp 2-220V:</b>	220V, 60Hz, single-phase, 6A - 2 HP, 14 AWG
<b>Electrical GF Hp 4:</b>	220V, 60Hz, 3-phase, single-phase, 13.36A - 4HP
<b>Plug &amp; Cord:</b>	Attached plug, flexible, 3 wire SJT 16 AWG, 6' long cord. NEMA 5-15 P (GFX HP 1,5 - 110V, GFX HP 2 - 110V) NEMA 6-20 P (GFX HP 2 - 220V) 3-phase hardwired (GF HP 4)
<b>Controls, GFX series:</b>	ON/OFF stainless steel keypad. IP 67 waterproof. No voltage release.
<b>Controls GF 4 Hp:</b>	Green ON & Red OFF (0) buttons + Emergency button. No-voltage release.



Certified to UL Standard 763  
 Certified to CSA Standard C22.2  
**GFX Hp 1.5 - GFX Hp 2 - 220**



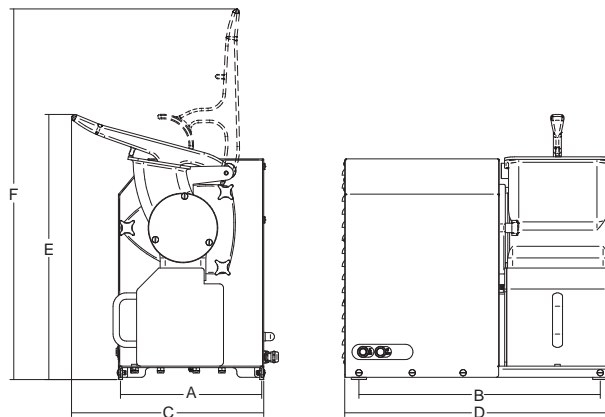
**GFX Hp 1.5**



**GF Hp 4**



**GFX Hp 1.5**  
 Optional s/steel tray



	Power	Power source	Drum revolutions	Mouth dimensions	A	B	C	D	E	F	Net weight	Shipping	Gross weight
	watt/Hp		r.p.m.	inch	inch.	inch.	inch.	inch.	inch.	inch.	lbs.	inch.	lbs.
<b>GFX Hp 1.5</b>	750/1	120V, 60Hz, 12 Amp.	1.680	5 <sup>33/64</sup> x 3 <sup>5/32</sup> "	10 <sup>15/64</sup> "	15 <sup>33/64</sup> "	14 <sup>9/64</sup> "	17 <sup>33/64</sup> "	16 <sup>7/32</sup> "	24 <sup>1/64</sup> "	55	29" x 14" x 20"	62
<b>GFX Hp 2</b>	1400/2	110V, 60Hz, 14 Amp. 220V, 60Hz, 6 Amp.	1.680	7 <sup>1/2</sup> " x 3 <sup>3/4</sup> "	10 <sup>15/16</sup> "	18 <sup>45/64</sup> "	14 <sup>7/8</sup> "	20 <sup>25/32</sup> "	20 <sup>35/64</sup> "	28 <sup>47/64</sup> "	75	36" x 36" x 25"	125
<b>GF Hp 4</b>	3000/4	220V, 60Hz, 3 phase, 13.36 Amp.	1.680	11 <sup>13/16</sup> " x 6 <sup>9/16</sup> "	13 <sup>3/8</sup> "	27 <sup>9/16</sup> "	25 <sup>3/16</sup> "	29 <sup>1/2</sup> "	25 <sup>3/16</sup> "	43 <sup>5/16</sup> "	139	33" x 34" x 33"	176